

WIFA[®] ROLLER SKATES

STREET

DUO
DELUXE

CHAMPION
LIGHT

NEW! **COLOR
CUSTOMIZABLE
ROLLER SKATES**



CATALOG

2025/26



ROLLER SKATES COLLECTION 2025/26

Schuhfabrik Franz Wittmann & Co GesmbH

Family owned skating shoe manufactory, founded 1920,
specialized in skating boots since 1960!

Quality Leather Boots made in Europe

More than 90% made of natural materials sourced in Europe!

Leather upper, leather lining, leather soles, wooden heel!

Sobotagasse 10
1230 Vienna, Austria
Phone: +43 1 486 33 12
Fax: +43 1 480 25 03
E-Mail: office@wifa.at

 wifaskates.com

   [/wifaskates](https://www.tiktok.com/@wifaskates)



Quality leather roller skates

Flexible leather uppers made of suede leather or firm nubuck leather, soft ankle padding providing both – support and protection of the ankle.

Designed for passionate skaters enjoying daily skate sessions, these boots are made for comfort and provide an ideal foot climate. The soft padding (tongue and boot) and smooth leather lining provide extreme comfort and support. Firm but flexible, the breathable natural materials mold themselves to the skater's feet.

The **WIFA Street** models are not specifically designed for inline skating, as more lateral stability at the front is required. **WIFA DUO** is a hybrid model that offers an interchangeable boot for ice skating in the winter and roller skating in the summer, while **WIFA Champion Light** is a high-end reinforced skating boot for the advanced skaters. We recommend inline figure skaters to check on our **ice skating collection** - the most popular hybrid models being **WIFA Prima Intermediate** and **WIFA Champion Light** for their soft shaft end and flexibility.





ROLLER SKATES COLLECTION MODELS



STREET SUEDE

► **Very flexible and breathable, large color range, maximum comfort, extensible ball area, „ready to skate model“, very short breaking in period.** The **STREET SUEDE** is made of a soft, very breathable „suede“ leather. It's the perfect model for jam & trail skaters who want to enjoy this trendy hobby with an excellent equipment. This model provides comfort as well as sufficient support to try out basics of all the skating disciplines: artistic skating, park skating, rhythm, choreographies including first jumps.

► **Firmer upper leather, 20% stronger than the Suede model, more durable.** The **STREET DELUXE** is made of NUBUCK leather and has all the advantages of the suede boots, but are made of firmer, leather of a higher quality. The thick leather makes the boots approx. 20% stronger and gives the skaters more security for more challenging moves as well as first park skating flips. They are also popular amongst ice skaters who want to try some artistic skating figures when roller skating.



DUO DELUXE

► **Pluridisciplinary model for skilled skaters with focus on park, artistic or rhythm skating. Firmer upper leather, more counter support than Suede & Deluxe, more stability for challenging flips and jumps, custom made options. Average breaking in time: 10-15 days.**



STREET XTREME

This nubuck leather boots have an additional ankle reinforcement providing the necessary support for skilled street & jam & rhythm & artistic skaters. The heel part is fixed with additional screws. The **STREET XTREME** is mainly for skilled park and rhythm skaters as well as for artistic skating in their first years of training.

► **An easy switching from ice skating to roller skating while using the same pair of boots – this is what recreational skaters dream of!**



DUO DELUXE

WIFA makes this wish come true with a new model „DUO“ that has it all. The **DUO DELUXE** is a little softer at the shaft end and therefore more flexible than an ice skate. Nevertheless, it offers sufficient support in the ankle and ball area to ensure safe gliding on the ice.

► **A high-performance competition skate boot available in four widths, designed for both figure and roller skating.**



CHAMPION LIGHT

Featuring a PU-coated leather upper, breathable microfibre lining, orthopedic insole with steel joint, and a heat-moldable construction, **CHAMPION LIGHT** offers exceptional support and comfort for advanced hobbyists and competitive skaters alike. Suitable for a wide range of disciplines—including synchronized skating and ice dancing—it supports

jumps up to triples for youth and doubles for adults, with optional blade mounting and eco-friendly packaging.

Information for Inline skaters and advanced artistic skaters

Street boots are not made for inline skating as this skating style requires more lateral stability at the front.



STREET SUEDE

Model specifications

Upper

flexible suede leather - thickness 1,4-1,7 mm

Lining

smooth leather- thickness 1,1-1,7 mm

Padding

full padding - double padding in ankle area

Reinforcement

- ▶ **heel counter support**
- ▶ ankle reinforcement & ankle pad
- ▶ inner counters up to mid foot
- ▶ full breathable reinforcement throughtout

Soles

leather soles and wooden heel, natural color
insoles with steel shank

Colors

various colors available
▶ see color chart on next page

Sizes

36-42

Width

C, standard wide



WIFA STREET SUEDE



SUEDE COLORS

	BLACK
	ROCK
	LILAC
	GRAPE
	TURQUOISE
	MOSS GREEN
	ACORN
	ROSE QUARTZ



STREET DELUXE

Model specifications

Upper firm NUBUCK leather - thickness 2-2,2 mm

Lining smooth leather- thickness 1,1-1,7 mm

Padding full padding - double padding in ankle area

Reinforcement

- ▶ **heel counter support**
- ▶ ankle reinforcement & ankle pad
- ▶ inner counters up to mid foot
- ▶ full breathable reinforcement throughout

Soles leather soles and wooden heel, natural color
insoles with steel shank

Colors **various colors available**
▶ see color chart on next page

Sizes **36-42**

Width **C, standard wide**



WIFA STREET DELUXE



DELUXE COLOR

	BLACK
	ROCK
	ORANGE
	PINK
	HONEY
	NAVY* (new)
	HAZEL* (new)

* ► pre-order only!



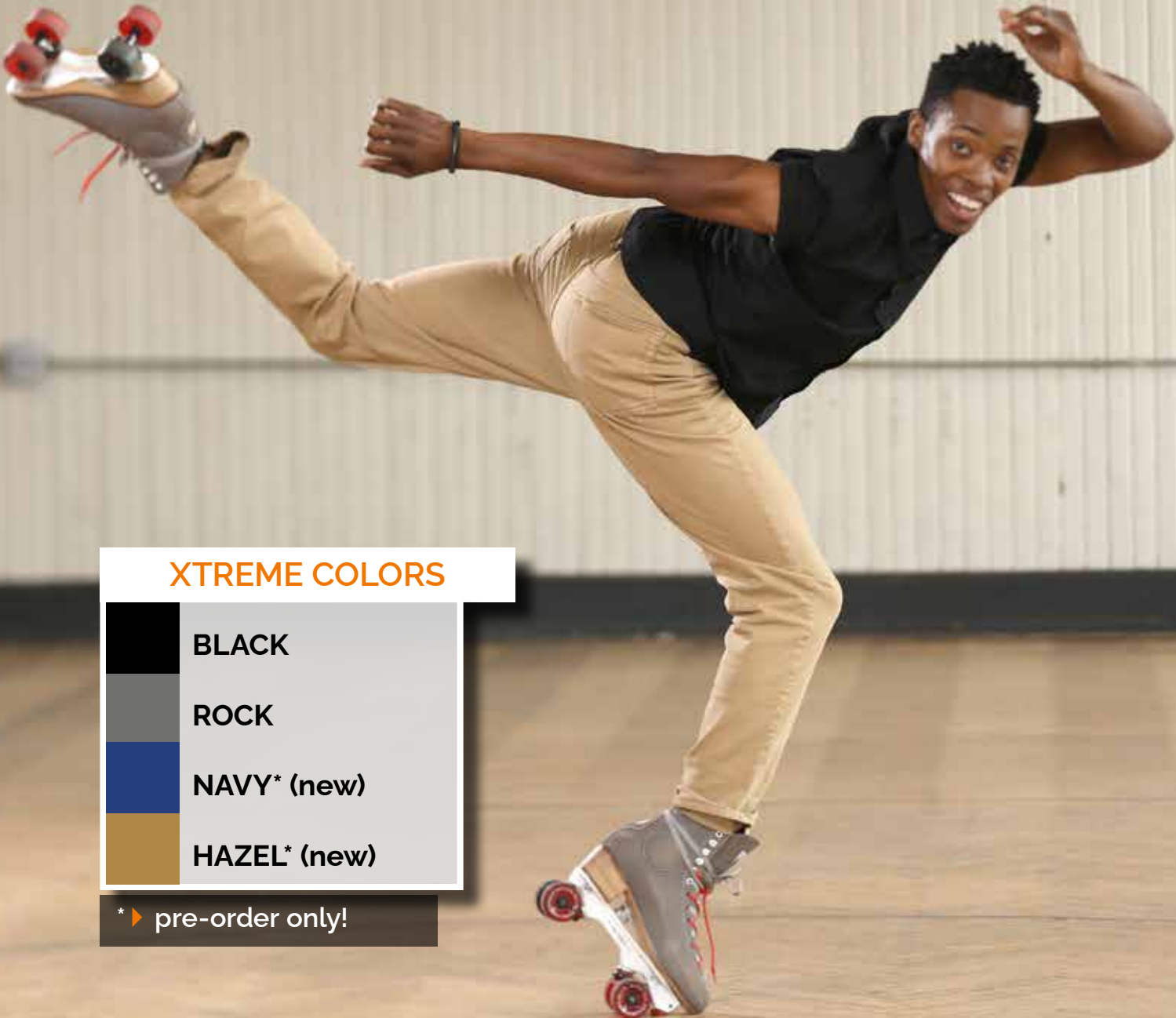
Model specifications

Upper	firm NUBUCK leather - thickness 2-2,2 mm
Lining	smooth leather- thickness 1,7 mm
Padding	full padding - double padding in ankle area
Reinforcement	<ul style="list-style-type: none"> ▶ full heel counter support up to shaft end ▶ approx. 40% stronger than Street Deluxe ▶ additional ankle support
Soles	leather soles and wooden heel, natural color
Colors	black, rock, navy*, hazel*
Special feature	black soles, thread, hooks and eyelets
Sizes	36-42 or 36-45
Width	C, standard wide





WIFA STREET XTREME



XTREME COLORS

	BLACK
	ROCK
	NAVY* (new)
	HAZEL* (new)

* ► pre-order only!



DUO DELUXE

Model specifications

Sizes	EU 34-42
Colours	Navy
Width	C (wide)
Upper	nubuck leather
Lining	soft trekking micro fiber
Soles	leather, natural colour
Set blades	MK Flight
Hardness	ca. 25

Hybrid model for ice and roller skating

An easy switching from ice skating to roller skating while using the same pair of boots – this is what recreational skaters dream of. WIFA makes this wish come true with a new model „DUO“ that has it all.

The **DUO Deluxe** is a little softer at the shaft end and therefore more flexible than an ice skate. Nevertheless, it offers sufficient support in the ankle and ball area to ensure safe gliding on the ice.

From blades to plates – how to remount

Skilled craftswomen & craftsmen can do the mounting themselves. Please find the mounting instructions on our website.

Tip for the retailer:

This model is made in the wider standard width „C“. As it is slightly softer in the ball area than the standard WIFA skate and therefore stretches within a short time. Heat molding is not necessary nor recommended.

WIFA DUO DELUXE





CHAMPION LIGHT

Model specifications

Sizes	EU 1-12 (equiv. 32-47)
Colours	white, black, fully color customizable
Widths	white: M, L, LL, C, CC / black: LL, C, CC
Upper	thick split leather, coated (2,4-2,6mm)
Lining	shaft-soft trekking micro fiber; tongue – anti-slip micro fiber-velour
Soles	leather, natural colour or black
Blades set	MK Flight – industrial sharpening, mounting included
Hardness	50
Special feature	heat moldable, soft cushion at shaft end

National and international competitions!

The **Champion Light** is a lightweight model for lightweight competitive athletes (35-55 kg) who are mastering their first triple jumps. This model has a very short breaking in time (5h) and is very flexible thanks to the flex notch. With its shorter shaft this model is also popular among dancers. Half sizes, 5 widths and heat molding allow a perfect fit!

Try out our **Color Customizable Skates Line - Champion Light** now available as One-Tone, Two-Tone or Multicolor customization!

Tip for the retailer:

Please read all relevant info on heat molding in our Technical Guide.



WIFA CHAMPION LIGHT





**COLOR
CUSTOMIZABLE
ROLLER SKATES**



WIFA COLOR CUSTOMIZABLE SKATES

Craft Your Own Style

Elevate your roller skating experience with our color customizable leather roller skating boots.

Choose from an unlimited array of vibrant hues, including all available nubuck and suede leather colors, to design a pair of skates that truly represents your unique personality.

Express yourself on the rink with a burst of individuality, making each stride uniquely yours!

Use our practical visualization tool to color customize your boots

We have created the **WIFA Visualizer** - an online tool to simulate the color combination of your dream skates! Depending on the WIFA roller skating model you can color-customize following boot elements:

- ▶ **inside and outside boot panels** | nubuck or smooth leather
- ▶ **tongue** | nubuck, suede or smooth leather
- ▶ **backstrap** | nubuck, suede or smooth leather
- ▶ **ankle circle** | nubuck, suede or smooth leather
- ▶ **notch** | black or white smooth leather
- ▶ **cushion** | black or white smooth leather
- ▶ **threads** | black or white
- ▶ **eyelets** | black or white
- ▶ **hooks** | black, white or silver

Available for the models **WIFA Street** and **WIFA Champion Light** in 3 types of leather - nubuck, suede and smooth (coated) leather, and also in 2 types of customization method: two-tone and multicolor!

WIFA Street Deluxe and Street Xtreme, as well as WIFA Champion Light can be customized both as a two-tone or multicolor combination, while Street Suede is currently available as a two-tone customization only.



How it works

1. visualize customization
2. save draft
3. send per e-mail



Time of production

10-12 weeks

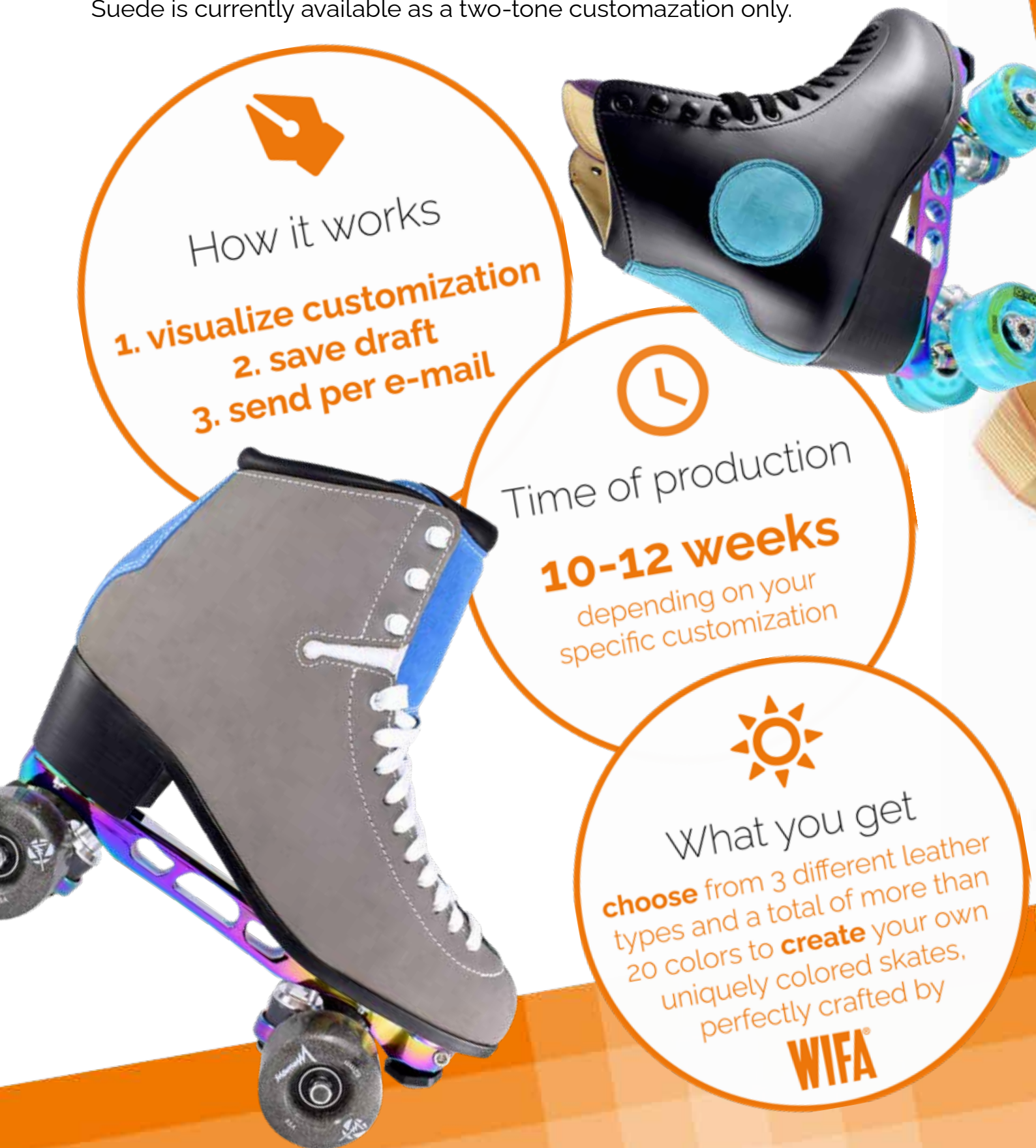
depending on your
specific customization



What you get

choose from 3 different leather types and a total of more than 20 colors to **create** your own uniquely colored skates, perfectly crafted by

WIFA®



WIFA COLOR CUSTOMIZABLE SKATES





STREET SUEDE

STOCK COLORS

available
in sizes:

36-42



BLACK



ROCK



WIFA STREET SUEDE

COLOR
CUSTOMIZABLE



GRAPE



LILAC





STREET SUEDE

STOCK COLORS

available
in sizes:

36-42



MOSS GREEN



ACORN

WIFA STREET SUEDE

COLOR
CUSTOMIZABLE



TURQUOISE



ROSE QUARTZ





STREET DELUXE

STOCK COLORS

available
in sizes:

36-42



BLACK



ROCK



WIFA STREET DELUXE

COLOR
CUSTOMIZABLE



ORANGE



PINK



HONEY



STREET
XTREME

STOCK COLORS

available
in sizes:

36-45



BLACK BV

COLOR
CUSTOMIZABLE

WIFA STREET XTREME



QUAD PLATES

STD, SPAIN

STD plates have a kingpin angle of 20° so they are suitable for all kinds of skating disciplines.

Most plates have 7mm axles. **ELYO** can be pre-ordered with 8mm bearings.

With **axle sleeves** you can use both, wheels with 7 mm and 8 mm axles. LED wheels, are only functional with the integrated 8 mm bearings. If you have 7mm axles you need to order axle sleeves to use them.

ELYO / SKILL metrical toe stops, 7 & 8 mm axles

HORNET imperial toe stops, 7 mm axles

HARRIER imperial toe stops, 8 mm axles

SUREGRIP, USA

We also offer the very popular quad plates from one of the US brand leaders SUREGRIP, the **AVENGER** and **AVANTI** Magnesium plates.

AVENGER imperial toe stops, 8 mm axles

AVANTI imperial toe stops, 8 mm axles

SUNLITE PLATES, USA

Lightweight **SUNLITE**-“Super Tuff Nylon” roller skate plates are extremely durable and therefore frequently use by high performance park skaters who appreciate the lightness as well as the durability in these plates.

SUNLITE imperial toe stops, 8 mm axles

WIFA QUAD PLATES

**SUNLITE
SKATES**

- ▶ Lightweight Sunlite Super Tuff nylon roller skate plate, extremely durable, 8mm axles
- ▶ aluminum double action trucks.

STANDARD VERSION

axles: 8 mm
toe stops: imperial
kingpin angle: 10°
truck width: 45 mm
assembly tool: included



Available in various colors
on pre-order!





STD HARRIER

LIGHTWEIGHT NYLON

axles: 8 mm
toe stops: imperial
kingpin angle: 15°
truck width: 45 mm



STD HORNET

LIGHTWEIGHT NYLON

axles: 7 mm
toe stops: imperial
kingpin angle: 20°
truck width: 45 mm
assembly tool: included



STD ELYO - beginners & advanced

LIGHTWEIGHT ALU ALOY

axles: 7 & 8 mm
toe stops: imperial
kingpin angle: 20°
truck width: 45 mm
assembly tool: included



WIFA QUAD PLATES

STD ION - skilled

LIGHTWEIGHT ALU ALOY

axles: 7 mm
toe stops: metrical
kingpin angle: 20°
truck width: 45 mm
assembly tool: included



STD SKILL DANCE

LIGHTWEIGHT ALU ALOY

WITH RAINBOW FINISH

axles: 7 mm
toe stops: metrical
kingpin angle: 20°
truck width: 45 mm
assembly tool: included



STD SKILL TITANIUM

LIGHTWEIGHT ALU ALOY

WITH RAINBOW FINISH

axles: 7 mm
toe stops: metrical
kingpin angle: 20°
truck width: 45 mm
assembly tool: included

axle, pivot, nutlock of titanium



Sure-Grip



AVENGER MAGNESIUM

ULTRA LIGHT Magnesium alloy baseplate

axles: 8 mm
toe stops: imperial
kingpin angle: 45°
truck width: 45 mm
assembly tool: included

- ▶ Up to 48 % lighter than ALU!
- ▶ High agility - ideal for dance/rhythm!

WIFA QUAD PLATES



AVANTI MAGNESIUM

ULTRA LIGHT Magnesium alloy baseplate

axles: 8 mm
toe stops: imperial
kingpin angle: 10° - high stability
truck width: 45 mm
assembly tool: included

- ▶ Up to 48 % lighter than ALU!
- ▶ Very stable - ideal for park / track skating!

ACCESSORIES

WIFA LACES

LABELLED

WHITE
YELLOW
AQUA
LILAC
BEIGE
MOSSGREEN

260 CM

BLACK **260-320 CM**



LOOSE

BEIGE
YELLOW
RED
GREY
ORANGE
HOT PINK
AQUA
BABY PINK
BROWN

260 CM

WHITE **240-280 CM**
BLACK **260-320 CM**



WIFA ACCESSORIES

WIFA PROTECTION CAPS

Leather caps with rubber drawstring to put over or to lace in.

COLORS:

purple, hot pink, orange, turquoise, jeansblue, moss green, grey, black



ACCESSORIES

STD TOE STOPS

all plates come with standard strong rubber toe stops in grey or white.



EXTRA STANDARD TOE STOPS

metrical

BLUE, BLACK, PINK, AMBER



EXTRA STANDARD TOE STOPS

metrical

MANGO, GRAPE, FLAMINGO, RED

MINI DANCE PLUGS

(empirical & metrical)

soft plastic

GRAPE, PURPLE, YELLOW, GREEN, BLACK



WIFA ACCESSORIES

BALL BEARINGS

SET (16 units) 7 MM

SET (16 units) 8 MM



AXLE SLEEVES

conversion of 7 mm axle to 8mm



With axle sleeves you can easily convert the 7mm axles to 8mm and use all your wheels that have 8mm bearings including LED wheels. Axle sleeves are especially important if you have European plates and want to use LED wheels! These only work with axle sleeves!

MOUNTING RECOMMENDATIONS

If you order our mounting service we will mount according to our recommendations. We mount slightly „off center“ as recommended by most specialized shops and top skaters.

placement of the plates and plate size

the placement is: heel as flush as possible, plates indented at the front.

short plate: space at front for dancers approx. 7-15 mm - **for more agility**

longest plate: lowest possible at front - **for more stability**

For STD plates, sizes 11, 12, 13, our standard mounting is lowest possible space at front to allow using one plate for 2 boot sizes if it is a child still growing.

If you want the mounting to be different to our recommendations, please advise.

How to mount the plate:

heel: 2 pull-through screws, 2 long screws (length 25 mm)

front part of boots: 2 pull-through screws (20mm) + 2 screws (16 mm)

CAUTION! In the inner boots - at the heel - screws are placed from the inside to the outside. These are very important for the stability of the heel to the shaft and must not be removed! If they are in the way when mounting a frame, please move them to another part and screw them in again.

Important information about sizing

WIFA boots are generally cut larger than normal street shoes.

With **STREET Suede** you need less toe space than with **STREET Deluxe & Xtreme**, because the leather is softer and more elastic and therefore adapts better to the shape of the foot.

As a rule of thumb, the following applies:

for **STREET Deluxe & Xtreme**, either the same size as the normal street shoes (wide feet) or or half a size smaller. For **STREET Suede**, it can be up to a whole size smaller than the normal street shoe.

Example:

A skater with a street shoe size 39 (UK6) , will usually wear a **STREET Deluxe & Xtreme** 38.5 (UK 5.5), or a **STREET Suede** 38 (UK 5).

TECHNICAL GUIDE & TUTORIALS

When determining the correct size, the shape of the foot is also important. Check out our FAQ ▶ <https://wifa.at/wifa-catalog>. See also our video tutorials for foot measurement and size selection! ▶ <https://wifa.at/wifa-video-tutorials>.

INSOLES PRINTS

As a final check you can print out the respective soles and put your foot on them - templates in PDF format can be found on our website under SIZE CHARTS > Print insoles ▶ <https://wifa.at/wifa-insoles>. Especially skaters with a Roman foot shape will be able to better estimate how much toe room they need for their personal comfort.

CAUTION!

Please measure the inner soles shortly after printing the A4 sheet to be on the safe side because of possible transfer distortions.

A toe space of 4-10mm has to be added depending on foot shape and age (space for growth).

WIFA SIZE CHART

WIFA STREET CHAMPION LIGHT			CA/US size	STD all models short plate	AXLE distance (mm)	PLATE length (mm)	SUNLICE SKATED (park) long plate	AXLE distance (mm)	PLATE length (mm)	Sure-Grip AVENGER (dancers) short plate	AXLE distance (mm)	PLATE length (mm)	Sure-Grip AVANTI (park) long plate	AXLE distance (mm)	PLATE length (mm)
EU	UK	fem													
30		1		11	110	205									
31		1½		11	110	205									
32	1	2		12	120	215				1	140	216	1	118	216
33	1½	2¾		12	120	215				1	140	216	1	118	216
34	2	3½		13	130	225	2	143	224	1	140	216	2	128	226
34½	2½	4¼		13	130	225	2	143	224	1	140	216	2	128	226
35	3	4¾		13	130	225	2	143	224	1	150	226	2	128	226
36	3½	5¼		13	140	225	3	152	233	2	150	226	3	138	236
36½	4	5¾		13	140	225	3	152	233	2	150	226	3	138	236
37	4½	6¼		14	140	235	4	155	247	2	150	226	3	138	236
38	5	6¾		14	140	235	4	155	247	3	160	236	4	148	246
38½	5½	7¼		15	150	245	4	155	247	3	160	236	4	148	246
39	6	7¾		15	150	245	4	155	247	4	170	246	5	148	256
40	6½	8¼		15	150	245	5	172	260	4	170	246	5	158	256
40½	7	8¾		16	150	255	5	172	260	4	170	246	5	158	256
41	7½	9¼		16	160	265	5	172	260	4	170	246	6	168	266
42	8	9¾		17	170	265	6	182	273	5	180	256	6	168	266
42½	8½	10¼		17	170	265	6	182	273	5	180	256	6	168	266
43	9	10¾		17	170	275	6	182	273	5	180	256	7	168	276
44	9½	11¼		18	180	275	7	190	283	6	190	266	7	178	276
45	10	11¾		18	180	275	7	190	283	6	190	266	7	178	276
45½	10½	12¼		18	180	275	7	190	283	6	190	266	8	188	286
46	11	12¾		19	190	285	8	197	295	7	200	276	8	188	286
46½	11½	13¼		19	190	285	8	197	295	7	200	276	8	188	286
47	12	13¾		19	190	285	8	197	295	7	200	276	8	188	286

